

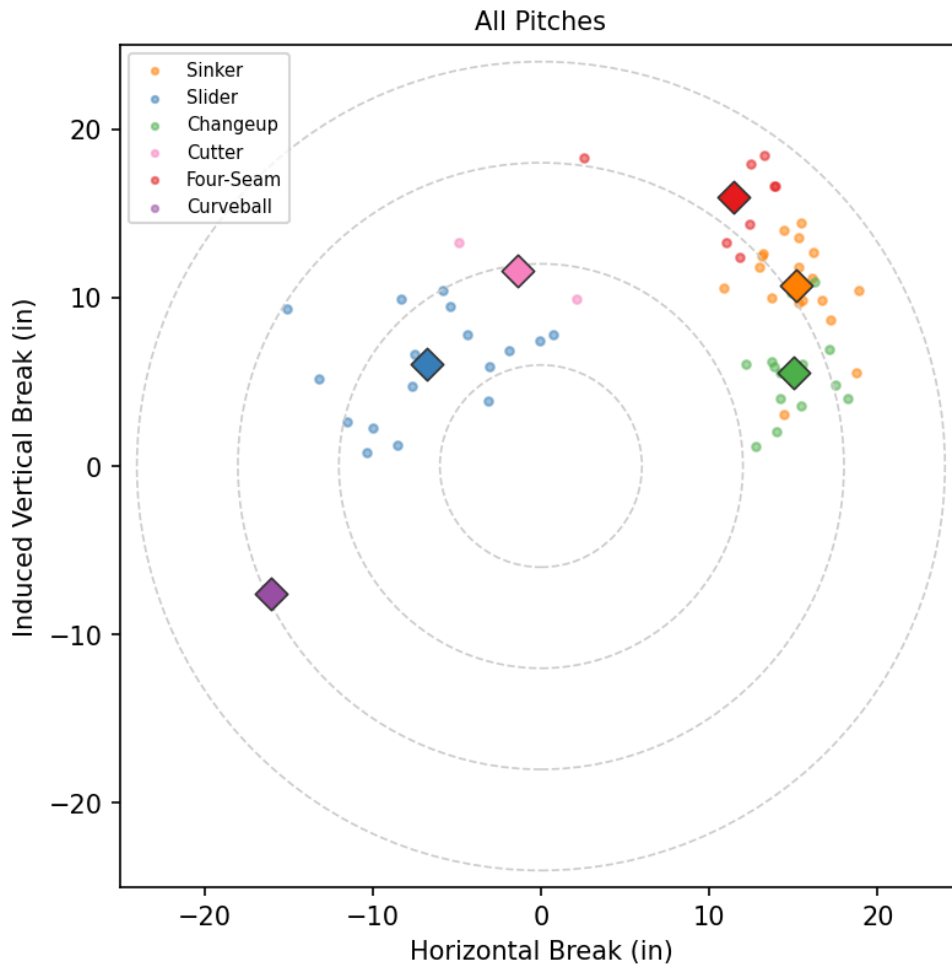
Ronnie Williams

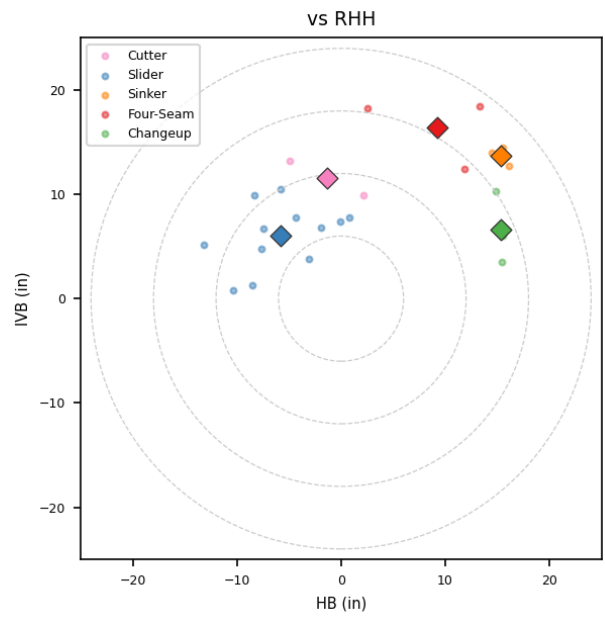
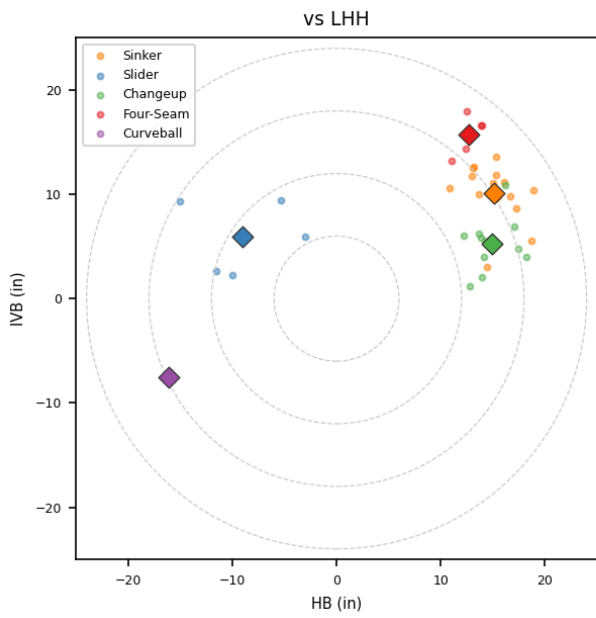
TIG_QUI | Right | 2026-04-16 to 2026-04-22

Pitching Profile

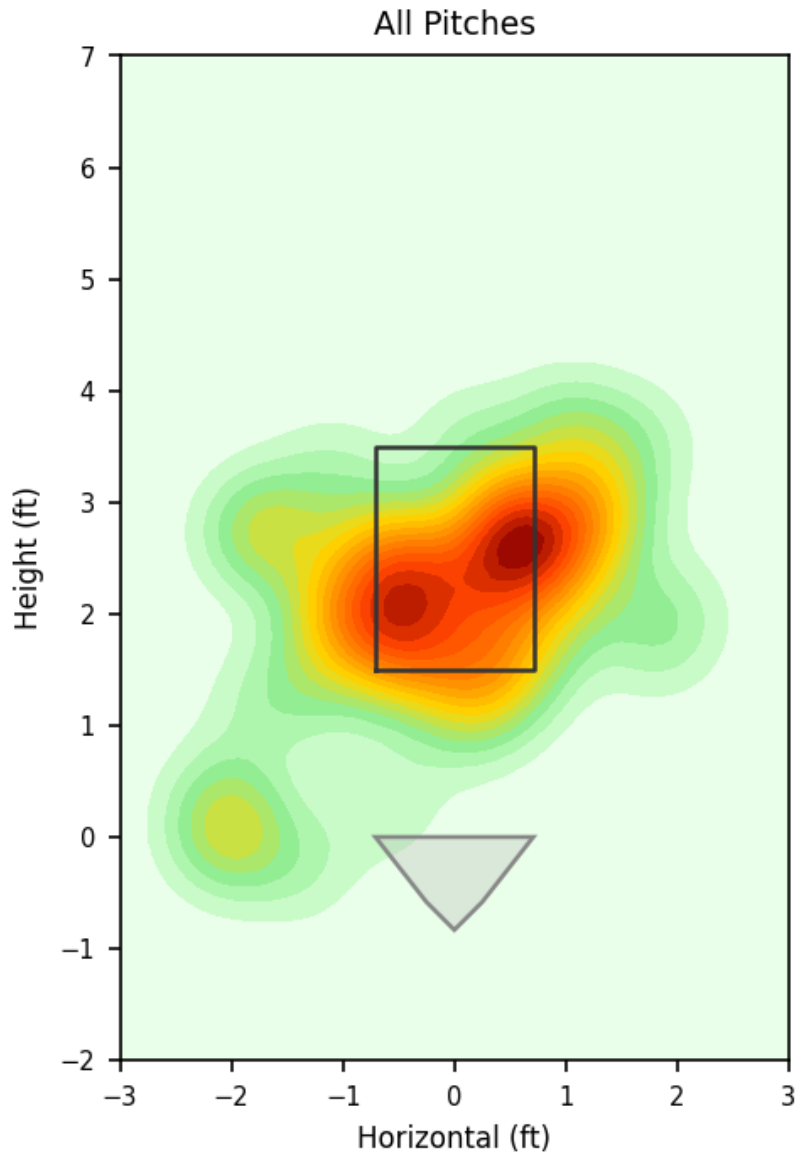
Pitch Type	Count	%	Avg Velo	Max Velo	Avg Spin	IVB	HB	Ext	Whiff%
Sinker	19	30.6%	93.4	95.0	2237.0	10.7	15.2	6.4	-
Slider	17	27.4%	85.9	88.6	2522.0	6.0	-6.8	5.7	50.0%
Changeup	14	22.6%	88.5	89.6	1746.0	5.5	15.0	6.5	20.0%
Four-Seam	8	12.9%	94.0	94.9	2385.0	16.0	11.4	6.3	100.0%
Cutter	2	3.2%	86.8	87.2	2552.0	11.6	-1.4	5.8	-
None	1	1.6%	-	-	-	-	-	-	-
Curveball	1	1.6%	78.7	78.7	2771.0	-7.6	-16.1	5.7	-

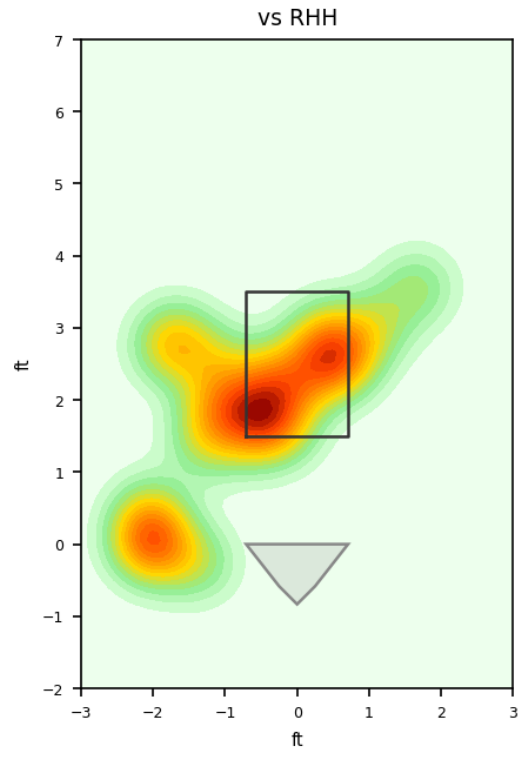
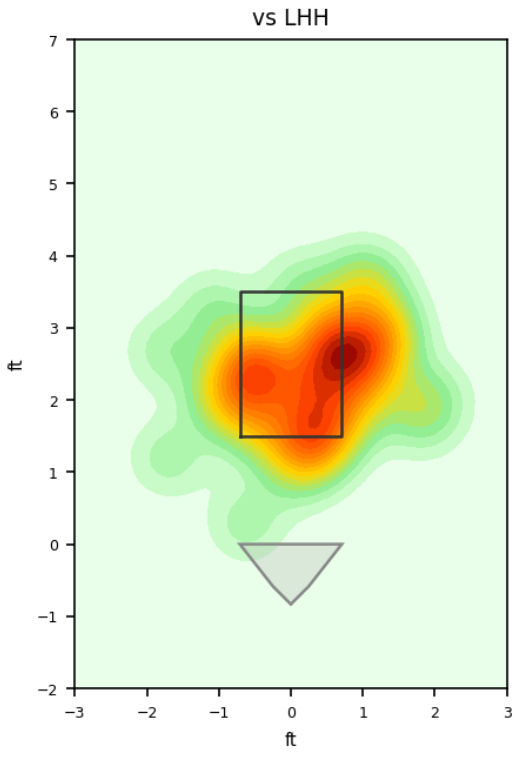
Movement Profile



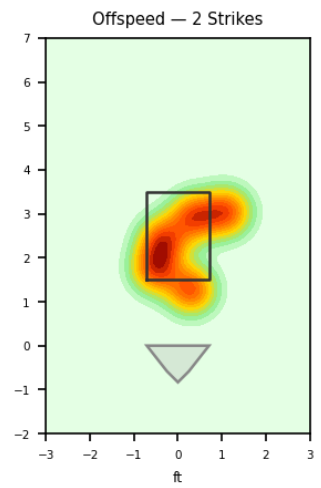
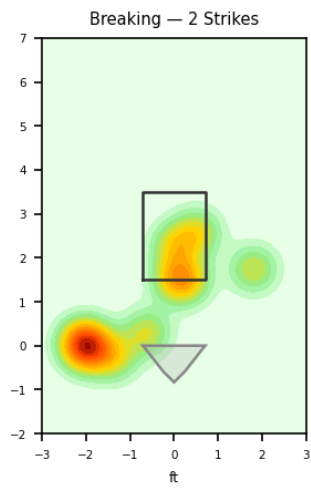
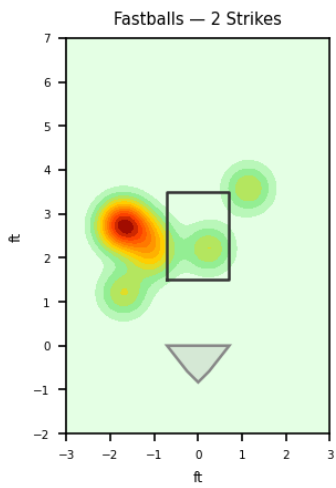
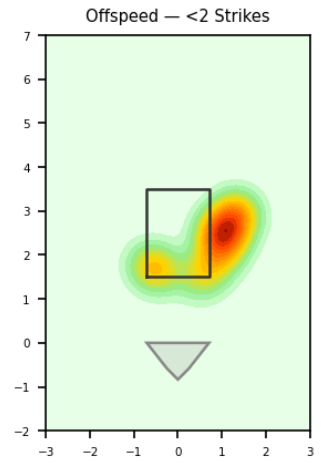
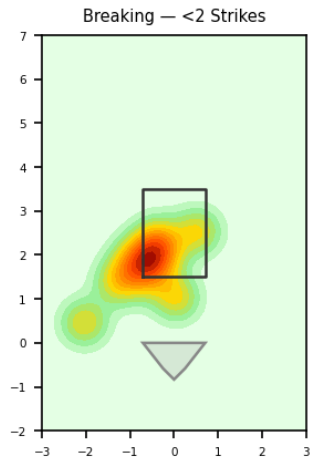
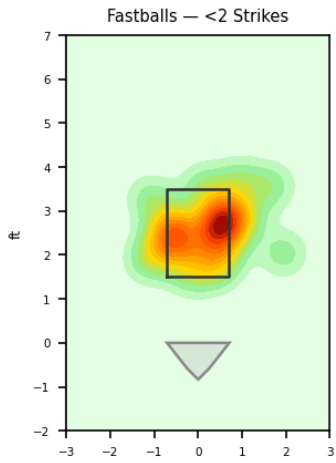


Location Density

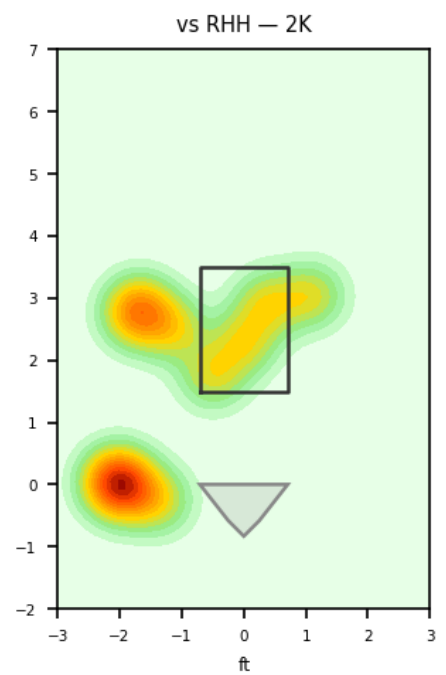
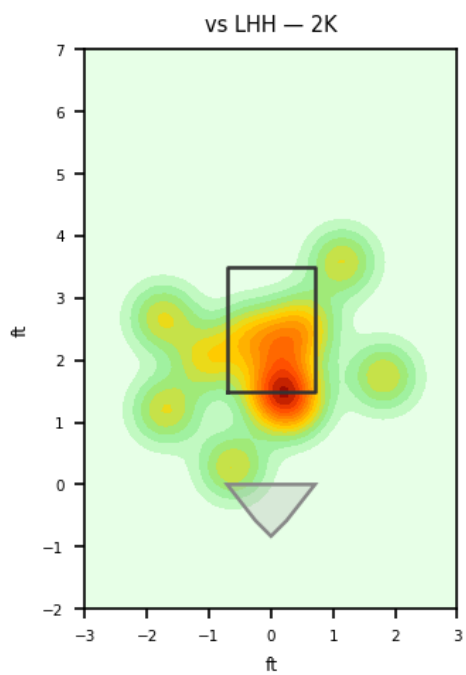
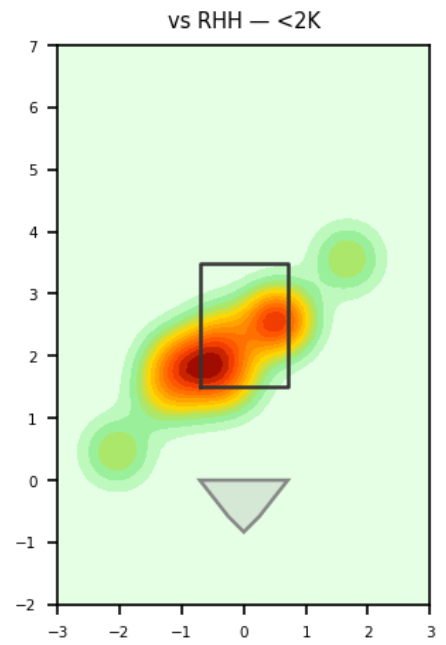
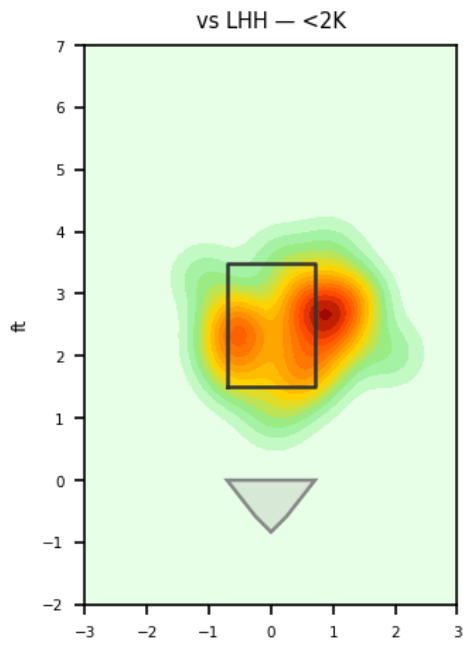




Location by Pitch Type & Count



Location by Handedness & Count



Splits vs LHH

Pitch	Count	%	Velo	Spin	IVB	HB	Whiff%
Sinker	16	42.1%	93.4	2209.0	10.1	15.1	-
Changeup	11	28.9%	88.8	1747.0	5.2	14.9	25.0%
Four-Seam	5	13.2%	94.0	2382.0	15.8	12.7	100.0%
Slider	5	13.2%	85.1	2556.0	5.9	-9.0	-
Curveball	1	2.6%	78.7	2771.0	-7.6	-16.1	-

Splits vs RHH

Pitch	Count	%	Velo	Spin	IVB	HB	Whiff%
Slider	12	50.0%	86.2	2508.0	6.1	-5.8	50.0%
Changeup	3	12.5%	87.4	1743.0	6.6	15.3	-
Four-Seam	3	12.5%	93.9	2390.0	16.4	9.2	-
Sinker	3	12.5%	93.9	2386.0	13.7	15.4	-
Cutter	2	8.3%	86.8	2552.0	11.6	-1.4	-
None	1	4.2%	-	-	-	-	-

Advanced Pitching (TrackMan)

Stat	Value	Stat	Value
Pitches	62	Games	1
Avg Velo	89.8 mph	Max Velo	95.0 mph
Avg Spin	2242.0 rpm	Extension	6.2 ft
IVB	8.6 in	HB	7.5 in
Whiffs	4	BIP	21
Avg Exit Velo	78.9 mph	Dates	2026-04-19 to 2026-04-19

Pitch Mix

Pitch Type	Count	Avg Velo	Max Velo	Avg Spin	IVB	HB	Whiffs	BIP
Sinker	19	93.4	95.0	2237.0	10.7	15.2	0	7
Slider	17	85.9	88.6	2522.0	6.0	-6.8	2	4
Changeup	14	88.5	89.6	1746.0	5.5	15.0	1	8
Four-Seam	8	94.0	94.9	2385.0	16.0	11.4	1	1
Cutter	2	86.8	87.2	2552.0	11.6	-1.4	0	0
None	1	-	-	-	-	-	0	0
Curveball	1	78.7	78.7	2771.0	-7.6	-16.1	0	1

Traditional Pitching (API)

Stat	Value	Stat	Value
W-L	0-1	ERA	5.4
G/GS	1/1	SV/HD	0/0
IP	3.1	H/ER/HR	3/2/0
K/BB	1/2	K/BB Ratio	0.5
WHIP	1.5	K/9	2.7
BB/9	5.4	BF	16